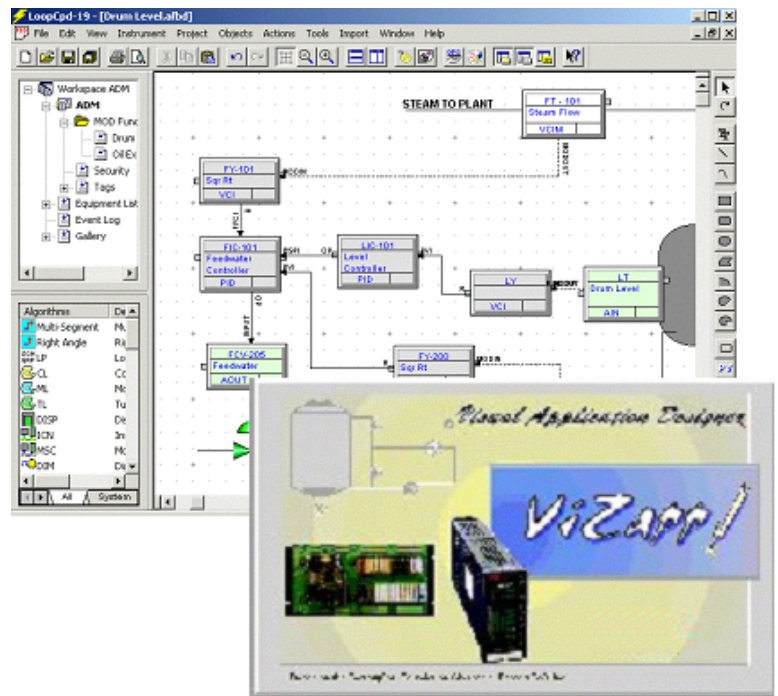


ViZapp™ Visual Application Designer

Configuration Software for MOD 30ML and MODCELL

Visual Application Designer

- Windows 95, 98, NT, 2000 or XP Operating Environment
- Graphic-Based, Efficient Engineering Tool with Logically Structured, Integrated Sequence, Logic and Continuous Control
- On-Line Debug and Loop Tuning
- Dynamic Displays with Process Symbols and Trend Windows for Easier Debug and Commissioning
- Automatic Population of OPC Server Tag Database
- On-Screen Documentation of Blocks, Connections and User Notes
- Complete Database Documentation in Tabular and Graphic Format
- OPC Servers Provides Modbus or ICN Communications to Any OPC Client Software.

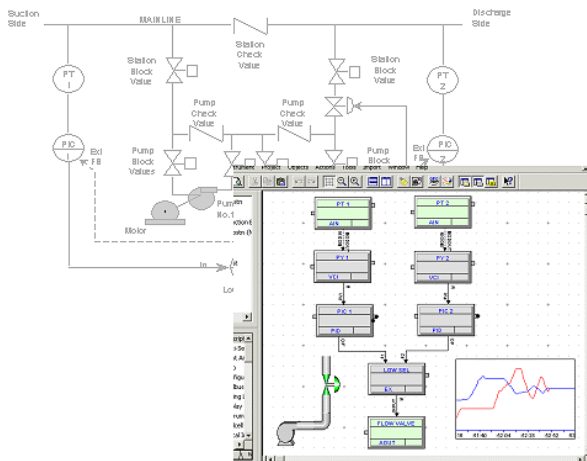


Visual Application Designer Software Offers a Complete Graphics-Based Configuration, Debug and Commissioning Package for MODCELL Multiloop Processors and MOD 30ML Multiloop Controllers.

Visual Application Designer (ViZapp)

The Visual Application Designer software provides a Windows-based environment for creating, editing, downloading, documenting and debugging MOD30ML and MODCELL Multiloop Processor databases. The graphical, function block configuration environment makes it easy to relate the process flow to the configuration. It provides automatic, on-screen documentation of the configuration, including signal source and destination, and "Smart" connections automatically snap to the correct block inputs. On-line, context-sensitive help is available for each block and function.

Live debug and runtime facilities allow on-line verification of the database and process logic, and trend windows simplify loop tuning at commissioning time. There is also a set of drawing tools that can be used to construct runtime displays or place dynamic process symbols next to the algorithm blocks in the configuration for easier debugging, without using a separate HMI package. A Smart Symbols gallery contains a library of standard configurations and static and dynamic process symbols. The user can create additional libraries with application-specific compounds and symbols.



Automatic report generation includes tabular reports containing all blocks in the system, their internal parameters, and all connections, as well as graphical reports showing the database diagram exactly as it is drawn. Once the database has been defined and saved, it is downloaded to individual MODCELL Multiloop Processors or MOD 30ML Multiloop Controllers using either the Extended Modbus or ICN OPC Server.

ViZapp may be ordered with either an Extended Modbus or ICN OPC server, or both. A network version of ViZapp is also available without an OPC Server. This allows configuration, debug, and download over a network to instruments connected to another node, where the OPC server is resident.

OPC Servers

These servers provide a communication interface between standard OPC clients and the control hardware. With a true OPC client, such as Genesis32, the tags are then read directly without having to re-enter them in the HMI database. The servers have been tested for operation under Windows 95, 98, NT and 2000. They are available as an integral part of ViZapp, or they can be ordered separately as a stand-alone package for use with additional nodes on a network, with other standard Modbus devices such as Commander recorders and controllers, or MOD30 instruments. Both servers directly support MOD30ML and Modcell MultiLoop IEEE floating point, improving resolution and eliminating the need for scaling in the host. The servers also have the ability to import interface files created by the MOD30ML and Modcell MultiLoop instrument configuration software, automatically and effortlessly creating the server's tag database.

OPC Servers are also available separately. See S-CS/MOD-OPC_2.

Extended Modbus OPC Server

The Extended Modbus OPC Server provides an enhanced communication interface for MOD30ML controllers, Modcell MultiLoop Processors. It also supports Standard Modbus RTU devices, such as the Commander Series of controllers and recorders.

ICN OPC Server

The ICN OPC Server provides a communication interface for MOD30ML controllers, Modcell MultiLoop Processors, and MOD30 series instruments through an Instrument Communication Network Link.

Extended Support Services (ESS)

Each Visual Application Designer and OPC package includes 30 days of technical support from date of the first support request call, and update protection for 30 days from date of the order.

The Extended Support Service option provides additional priority technical support and automatic issue of new ViZapp or OPC Server software releases for a period of twelve months from the date of the order.

MINIMUM SYSTEM REQUIREMENTS

Windows 95/98 (Minimum OS)

- IBM Compatible personal computer
- Win95 with Service Pack 1 or Win98
- 133MHz Pentium
- 64MB RAM
- 150MB free hard disk space
- CD-ROM Drive
- Video 1024 x 768 16-bit Color
- One Free Parallel or USB Port

Windows NT/2000/XP (Preferred OS's)

- IBM Compatible personal computer
- NT 4.0 with Service Pack 6, or Windows 2000
- 266MHz Pentium
- 64MB RAM
- 150MB free hard disk space
- CD-ROM Drive
- Video 1024 x 768 16-bit Color
- One Free Parallel or USB Port

Note: USB is not supported on all systems

COMMUNICATION REQUIREMENTS

Visual Application Designer communicates with MOD30ML or MODCELL Multiloop Processor via a serial connection, over either an RS-232, RS-422 or an RS-485 interface, using one of the OPC servers. ViZapp development packages include a communications cable for the front port of the MOD30ML, which may also be ordered separately. Downloads must be at 9600 baud or higher.

COPY PROTECTION

A hardware copy protection key is required for execution is provided with each package. ViZapp is available with either a parallel port or USB style key. Note that not all systems support USB. Hardware keys from the 1706S Instrument Configurator or the 2006S Application Builder software will not be recognized by the Visual Application Designer.

ORDERING INFORMATION

NOTES:

- The following End-User information must be supplied for each package:
 - Company Name
 - Complete Address
 - Contact Name
 - Telephone Number
 - Fax Number
- When ordering an Update, Upgrade or ESS, serial number from original ViZapp must be supplied on order.

VIZAPP	—	DEV	—	—
Configuration Development Software for MOD30ML and MODCELL MultiLoop Controllers <div style="text-align: right;">VIZAPP</div>				
Communications Interface Deluxe - ICN and XModbus OPC Servers Included <i>Includes one downloading cable 109S1854 for MOD30ML</i> ICN OPC Server Included Extended Modbus OPC Server <i>Includes one downloading cable 109S1854 for MOD30ML</i> Network (No OPC Server Included)	DLX ICN XMB NET			
Functionality Development		DEV		
Software Key Type Parallel Port USB (Universal Serial Port)			PAR USB	
Extended Support Services (ESS) None One Year Technical Support & Version Updates				000 ESS

Documentation and Accessories	
<i>Note: Each ViZapp package includes electronic documentation on the CD</i>	
Modcell MultiLoop Processor User's Guide	98280-417
MOD30ML User's Guide	98280-418
Modcell & MOD30ML User's Guide	98280-419

Extra MOD30ML Download Cable <i>For connection to front jack - Not for use on NEMA4 style of instrument</i> <i>Note: ViZapp development packages containing an XModbus OPC Server include a cable</i>	109S1854
-------------------------------------------------------------------------------------------------------------------------------------------------------------------------------------------------------------	----------

VIZAPP UPGRADES and VERSION UPDATES:

VIZAPP	—		—	—
ViZapp Upgrade from 2006S Application Builder or Single-Server Version of ViZapp to Deluxe Version VIZAPP				
Communications Interface Deluxe - ICN and XModbus OPC Servers Included ICN OPC Server Included Extended Modbus OPC Server	DLX ICN XMB			
Functionality Development Upgrade from 2006S Application Builder Development Upgrade from ViZapp - ICN or XMB to DLX		UGA UPV		
Software Key Type Parallel Port USB (Universal Serial Port)			PAR USB	
Extended Support Services (ESS) None One Year Technical Support & Version Updates				000 ESS

VIZAPP	—	UPD	000	—
ViZapp Version Update VIZAPP				
Communications Interface Deluxe - ICN and Xmodbus OPC Servers ICN OPC Server Extended Modbus OPC Server Network (No OPC Server)	DLX ICN XMB NET			
Functionality Version Update		UPD		
Reserved Unused Characters			000	
Extended Support Services (ESS) None One Year Technical Support & Version Updates <i>Note: Update to existing software only – does not add functionality</i>				ESS

VIZAPP	000	REN	000	ESS
Extended Support Services (ESS) Renewal One Year Technical Support & Version Updates <i>Subscription Renewal Only - Does Not Include Update to Current Version</i> VIZAPP	000	REN	000	ESS

Note: Must be ordered before existing subscription expires

NOTES

www.micromodautomation.com

The Company's policy is one of continuous product improvement and the right is reserved to modify the information contained herein without notice.

Printed in USA (05.12.04)

© MicroMod Automation, Inc. 2004



MicroMod Automation, Inc.
75 Town Centre Dr.
Rochester, NY 14623 USA
Tel: (585) 2321-9200
Fax: (585) 321-9291
Email: sales@micromod.com

S-MOD-ViZapp_1